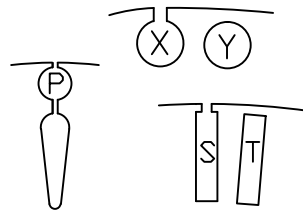
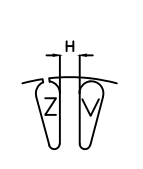
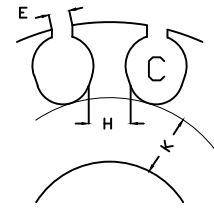
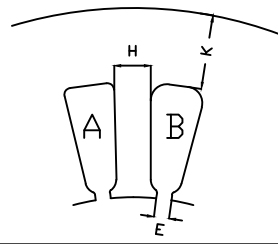




Nuova Volonterio S.r.l.

20010 CORNAREDO - MILANO
VIA GHISOLFA, 63/65 - Tel. 02-9362256/57/878
Fax 02 - 93566013

www.nuova-volonterio.com
e-mail: info@nuova-volonterio.com



STATORI

ROTORI

Mod.	« Yl «]	n. cave	mmq	E	K	H	« Y	n. cave	mmq	H	« ZU'		
97 R	33x18	12	A 16.7	1.6	3	1.8	17.4	13	Z 4.38	1.82	7-7.04-7.3		
97 R/1							16	Z 4.7	1.2				
97 E							18	V 3.70	0.83	9.05			
97 SC	33x18 (31)						17.4	13	Z 4.38	1.82	7-7.04-7.3		
97 SC/1							16	Z 4.7	1.2				
98	42x21.55	12	A 32.67	2.24	3.6	1.7	20.92	17	Z 4.94	1.63	7-9-9.06-9.1-12		
98 S	39.90x21.55											2.58	
98 A	52x27.5	12	A 47	2.5	4.3	3	26.9	15	Z 8.50	2.54	12-12.1-14		
98 A/1								17	Z 9.30	1.87			
98 AR	50x27.5	12	A 47	2.5	3.3	3	26.9	15	Z 8.50	2.54	12-12.1-14		
98 AR/1								17	Z 9.30	1.87			
98 B	55x27.5	12	A 47	2.55	5.88	3	27.5	11	X 10	2.80	6-8-10-11-14		
98 B/1								17	V 9.3	1.87			
98 BF	55x27.5	12	A 43	2	5.85	2.97	30	11	X 10	2.80	6-8-10-11-14		
98 BF/1								17	V 9.3	1.87			
98 C	55.7x30	12	A 43	2	5.85	2.97	30	17	Y 6.2	2	10		
99	60x30	12	A 46,48	2.5	6.87	3.6	29.4	15	Z 12.26	2.6	9-10-12		
99/1							30						
100 A	73x38	12	A 29	1.8	9.5	2.16	38	18	V 20	2.07	6-8-10-12-14-15-17-18		
100 A/1								17	V 12	2.58			
100 A/2								37.2	18	V 20		2.07	
100 A/3	73x38 (68)	24	A 29	1.8	9.5	2.16	38	17	V 12	2.58	6-8-10-12-14-15-17-18		
100 AS								18	V 20	2.07			
100 AS/1								38	17	V 12		2.58	
100 AS/2	73x38 (71/71)	24	A 29	1.8	9.5	2.16	37.2	18	V 20	2.07	6-8-10-12-14-15-17-18		
100 AS/3								17	V 12	2.58			
100 AQ								38	18	V 20		2.07	
100 AQ/1	73x38 (71/71)	24	A 29	1.8	9.5	2.16	38	17	V 12	2.58	6-8-10-12-14-15-17-18		
100 AQ/2								37.2	18	V 20		2.07	
100 AQ/3								17	V 12	2.58			
100 AR	64x38	12	A 84	2.4	7.2	3.2	38	18	V 20	2.07	8-10-12-14-15-17-18		
100 AR/1								17	V 12	2.58			
100 AR/2								37.2	18	V 20		2.07	
100 AR/3							17	V 12	2.58				
100 B	73x38	12	A 84	2.4	7.2	3.2	38	17	V 12	2.58	8-10-12-14-15-17-18		
100 BS	73x38 (68)												
100 BQ	73x38 (71/71)												
100 D	73x38.5	12	A 86	2.2	7	3.2	38.5	17	Z 19.6	2.6	6-8-10-14		
101 C	80x40	18	A 57	1.8	9.75	2.9	40	22	Z 16.5	2.14	15		
101 D	80x45	24	A 49,7	2	6.5	2.63	45	22	Z 18,2	2.73	14-15-16-18-22		
101 DZ/1			A 50	2.3					Z 21.3	2.3	15-18-22-25		
101 DS			A 49,7	2					Z 18,2	2.73	14-15-16-18-22		
101 DZS/1	80x45 (72)	24	A 50	2.3	6.5	2.63	45	22	Z 21.3	2.3	15-18-22-25		
101 DC	80x45 (78)		A 49,7	2					Z 18,2	2.73	14-15-16-18-22		
101 E	80x40	12	A 71	2.5	10	5	40	18	Z 16	2.8	6-8-9-12-14-15-16		
101 F	73x40											6.5	
102 B	90x45 (88/88)	24	A 49	2.2	11.5	2.6	45	18	Z 25	2.96	12-15-17-18		
102 B/1								16	V 25	3.5			
102 C	90x50	24	A 50	2.3	9	3.3	50	22	Z 20	3.2	9-15-16-17-18-20		

STATORI							ROTORI								
Mod.	« Yl «]	n. cave	mmq	E	K	H	« Y	n. cave	mmq	H	« ZU'				
102 D	90x47	24	A 38	1.8	12	2.93	47	18	Z 20	3.6	8-12-15-15.2 16-17-18-19-20				
102 D/1							32	V 9.5	1.9						
102 D/2							46.1	18	Z 20	3.6					
102 D/3							32	V 9.5	1.9						
102 E	90x45 (88/88)	12	A 57	2	13.4	7.3	45	16	V 25	3.5	12-15-17-18				
102 E/1							18	Z 25	2.96						
102 G	90x57	24	A 49.5	2.2	6	3.7	57	30	V 16.3	2.94	18-21				
102 N	68	16	C 61.4	2.62		4.15	92x68	22	R 15.5		18				
102 N/1		12	C 74.3	3.1						26.2-27					
102 N/2		16	C 61.4	2.62		4.15				18-26.2-27					
102 P	68	16	C 61.4	2.62		4.15	92x68	22	R 22.5		18				
102 P/1		12	C 74.3	3.1						26.2-27					
102 P/2		16	C 61.4	2.62		4.15				18-26.2-27					
104 A	101x55	24	A 63	2.3	10.5	3.3	55	28	V 16	2.66	16-17-19-20-22				
104 A/1							54.3								
104 AM	110x55	24	A 63	2.3	15	3.3	55	28	V 16	2.66	16-17-19-20-22				
104 AM/1							54.3								
105 A	107x66	24	A 63	2.23	8.6	4.6	66	30	Z 22	3.09	17-18-20-22-23.7				
105 AM	110x66														
105 AMQ	110x66 (107x107)														
105 BM	110x55 (105x105)	24	A 41	2.2	17	4.5	55	28	V 16	2.66	16-17-19-20-22				
105 BM/1												54.3			
105 BR												55			
105 BR/1	101x55				12.5		54.3								
105 F	107x55	24	A 63	2.3	13.5	3.3	55	18	Z 34	4.1	15-16-17-18-19-20-22				
105 FM	110x55											15			
105 FR	106.5x55											13.25			
106 B	110x58	24	A 61	2	14	3.44	58	18	Z 37	4.1	17-22				
107 A	125x65 (123/123)	24	A 69	2.2	17.5	4	65	18	Z 38	5.35	17-20-22-24-25				
107 A/1												31	V 10.4	3.7	
107 A/2												28	V 28.5	3	
107 C	125x70	24	A 97	2.3	10.3	5.2	70	30	V 28	3.4	24-25				
107 CR	120x70											7.8			
107 CA	120x70											10			
107 CAM	125x70		A 90	2.5	12.5	4.8									
107 D	125x62 (123/123)	24	A 80	2.5	18	3.5	62	18	Z 43	4.5	17-22-25				
107 DR	122x62											16.5			
107 DP	120x62											15.5			
107 E/1	125x80	36	A 52	2.3	9.7	3.5	80	30	Z 33	4.24	20-25-30				
107 ER/1	122x80											8.2			
107 F	125x71	24	A 74	2.4	15.3	3.82	71	30	Z 25	3.06	17-20-25				
107 F/1									V 21	3.68					
107 G	125x80	24	A 72	2.4	9.75	5.3	80	30	Z 33	4.24	20-25-30				
107 GR	122x80											8.25			
108 C	135x86	24	A 87	2.6	11	5.96	86	30	V 37	4.68	20-22-24-30				
108 E	135x80	36	A 69	2.3	12	3.63	80	46	Z 23	2.6	17-24-30-40.5				
108 E/1								28	Z 39.1	4.41					
108 F	135x70	24	A 105	2.5	17.1	3.9	70	18	Z 60	5	17-20-22-24-25-30				
108 F/1								31	V 21.12	3.51					
108 H	135x90	36	A 66	2.1	8.2	3.96	90	26	Z 43	5.73	30				
109	140x72	24	B 120	2.3	16.4	3.8	72	29	Z 34	3	22-25-30				
110	140x80	24	B 143	2.75	10.9	4.5	80	28	Z 42	3.8	26				
110 D	150x96	36	A 65	2.8	13.2	4.7	96	28	Z 42	5.9	30-36				
110 DM	152x96											14.2			
111 D	150x90	36	A 76	2.3	13.7	4.17	90	28	Z 47	5.1	26-33-36-38				
111 DM	152x80											14.7			
111 E	150x80	24	A 115	2.5	19.5	4.32	80	18	Z 68	5.86	33-35-36				
111 EM	152x80											20.5			
111 H	150x103	36	A 77	2.5	9	4.4	103	42	Z 42	3.8	30-36				
111 HM	152x103											10			
112 C	160x90 (158/158)	36	B 92	2.53	12.8	4.5	99	34	Z 62	3.75	21.65-25-25.3				
112 C/1									Y 16	4.11					
115	173x103	36	A 92	2.5	17.7	4.94	103	28	Z 55	6.1	30-38				
115 R	170x103											16.2			

STATORI							ROTORI				
Mod.	« Yl «]	n. cave	mmq	E	K	H	« Y	n. cave	mmq	H	« ZU'
116	173x90	24	A 158	2.7	23	4.95	90	30	Z 63	3.2	36-38-45
116/1								18	Z 97	6.6	
116 R	170x90	36	A 98	2.5	21.5	5.3	115	34	Z 41.4	6.3	24-35-38
116R/1								18	Z 97	6.6	
116 A	173x115	36	A 140	2.5	12	4.3	118	44	V 61	3.9	24-35
116 AR	170x115										
117	178x118	36	A 110	2.5	28	4.13	110	30	P 67	4.96	42-50
123	193x115										
125	200x110	36	A 123	2.5	26.2	4.4	110	30	P 67	4.96	42-50
125 A											
125 B	200x125	36	A 105	2.5	20	6	125	28	P 67.5	7.31	42-50
125 C	200x135										

STATORI					ROTORI			
Mod.	« Yl «]	Sagoma	D	F	« Y	n. cave	mmq	« ZU'
500 B	50x26.1	G	43		25.5	8	W 35	5.6
505	60x35.6	G	47		35	12	W 34.7	6-8-10-11
520	64x36	G	54.5		35	8	W 55.4	6-8
520/1						12	W 37.4	
598	149x81.6	G	118		80.9	20	W 62	10.1-12.1-15-15.1
598/1						28	W 32.5	
704	52x44x33	L	44	52	32	12	W 32	7
528	72x38.5	G	61		38.5	19	Z 15	4-8